



LE BURGER

Kaiserfeldgasse 1

8010 Graz

T +43 316 395200

www.leburger.at

The „Burgermanufaktur“ Le Burger: Fresh, handmade, and prepared with passion - since September 2021, the Austrian family-owned company Le Burger has been turning the Graz burger scene upside down with handmade buns and patties, as well as fresh regional ingredients. Convenience products are taboo, the meat comes from the region, is freshly ground daily on-site, and then hand-formed into patties. The highlight: Everyone can create their own unique „burger“ from 20 regional ingredients in thousands of variations - from vegan to low-carb and at no extra cost. In addition, they offer crisp salads, homemade-style fries, and homemade sauces, as much as you want. Furthermore, Le Burger offers its guests premium steaks, desserts, fine wines, exquisite cocktails, and much more.

ACCESSIBILITY

Public Transportation

Transportation hub „Jakominiplatz“ is approximately 200 m away.

Please use the route planner of Verbundlinie Steiermark:

[https://verkehrsAuskunft.verbundlinie.at/](https://verkehrs Auskunft.verbundlinie.at/)

Parking

- Short-term parking zone in Kaiserfeldgasse.
- A total of 5 designated disabled parking spaces in Schmiedgasse 31 and Kaiserfeldgasse 11, 12, 13 (approximately 150 - 200 m away).

ENTRANCE

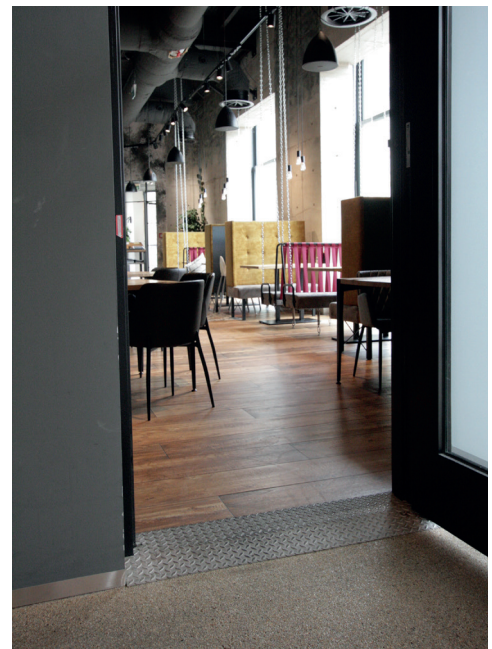
The barrier-free entrance is not the **main entrance!**

Barrier-free Entrance

- Access through the foyer of the Sparkasse bank on the other corner of the building. (Outside of the bank’s operating hours, a bank card is required to open the door to the foyer.)
- Slightly sloped access with a 3% gradient.
- Automated glass sliding door (**insufficiently marked**), opens prematurely and closes with a delay.
- Door width of 116 cm, without thresholds, entrance mat easily rollable.
- From the foyer to the restaurant: Swinging door with a passage width of 98 cm.
- Door closer, not easy to open, door handle at standard height.
- Threshold bridged with a ramp plate.



Accessible entrance



Access to the restaurant

MAIN ENTRANCE

- 3 uneven steps, heights of 17.5 and 20 cm (standard max. 16 cm), protruding tread plates.
- Step depth of 30.5 and 32.5 cm; curved steps.
- Vestibule: 1st door difficult to open, door width of 63 cm (standard min. 80 cm); two-winged door, but the 2nd wing is locked; glass door, not marked; vertical door handle.
- 2nd door: Double-winged door, each wing with a passage width of 75 cm; glass door, not marked; vertical door handle.



Main entrance



Main entrance

INTERIOR AREA

- Floor covering suitable for easy rolling, generous passage widths.
- Tables and chairs are movable, but there are also fixed benches; seat height of 45 - 46 cm.
- Different tables; with 4 legs: 80 x 80 cm, height under table 72 cm, table edge height 75 cm, depth under table 80 cm.
- With central base: 80 x 80 cm, height under table 74 cm, table edge height 77 cm, **depth under table 37.5 cm.**



Indoor area

ACCESSIBLE TOILET (IN THE SPARKASSE FOYER)

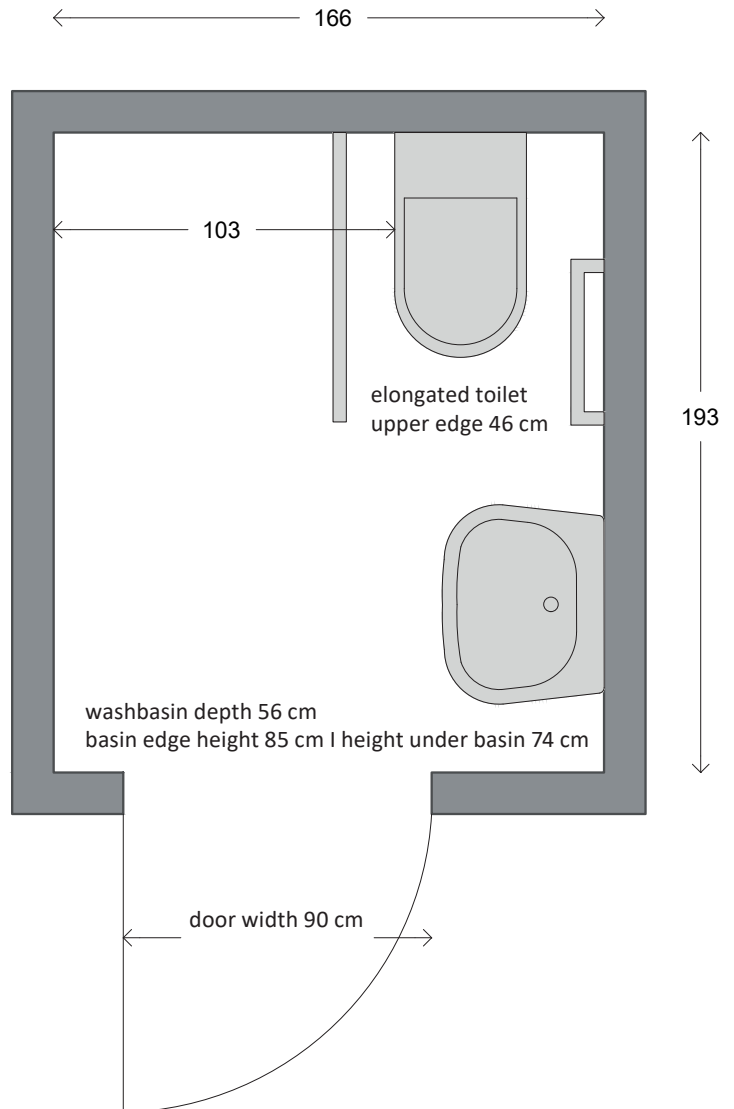
- The key for the toilet can be obtained from the staff of the restaurant!
- Toilet for both genders (unisex).
- Access to the toilet: Swinging door with door handle (inside panic grip).
- Difficult to open due to door closer; door width of 84 cm.
- Toilet door: Swinging door with door handle, easy to open, door width of 90 cm.
- **Turning space of 150 cm not available.**
- Toilet height: 46 cm, elongated bowl, backrest available.
- Approachability from the left side (103 cm space on this side).
- Folding support rail with integrated toilet flush on the left (at standard height), right-angle grip on the right (standard height).
- Toilet paper and flush easily reachable when seated.
- Large washbasin with a depth of 56 cm, width of 58 cm, and height under the basin of 74 cm (flat cleaning siphon), basin edge height 85 cm, single-lever faucet.
- Space in front of the basin: 117 cm.
- Mirror bottom edge at **127 cm** (standard max. 95 cm).
- Emergency bell available.



Entrance area accessible toilet



Accessible toilet



ADDITIONAL INFORMATION

- Changing table in the anteroom of the accessible toilet.
- Children's menu available.

As of April 2023, all information is provided without guarantee